

CLERK'S OFFICE  
APPROVED

Date: 6-20-00

Submitted by: Chairman of The Assembly  
at the Request of the Mayor  
Prepared by: Department of Community  
Planning and Development  
For reading: MAY 16, 2000

Anchorage, Alaska  
AO 2000-83

AN ORDINANCE AMENDING THE ZONING MAP AND PROVIDING FOR THE  
REZONING FROM R-3 (MULTIPLE-FAMILY RESIDENTIAL) TO PLI (PUBLIC  
LAND AND INSTITUTIONS) FOR GEORGEVILLE ESTATES SUBDIVISION,  
BLOCK 1, TRACT A, GENERALLY LOCATED ON THE NORTHEAST CORNER  
OF WEST 88TH AVENUE AND JEWEL LAKE ROAD.

(Sand Lake Community Council)(Planning and Zoning Commission Case 2000-012)

THE ANCHORAGE ASSEMBLY ORDAINS:

Section 1: The zoning map shall be amended by designating the following  
described property as PLI (Public Land and Institutions District) zone:

Georgeville Estates Subdivision, Block 1, Tract A, as shown on Exhibit A  
attached (Planning and Zoning Commission Case 2000-012).

Section 2. The Director of Community Planning and Development shall change  
the zoning map accordingly.

Section 3. This ordinance shall become effective immediately upon passage and  
approval by the Anchorage Assembly.

PASSED AND APPROVED by the Anchorage Assembly this 20<sup>th</sup> day  
of June, 2000.

ATTEST

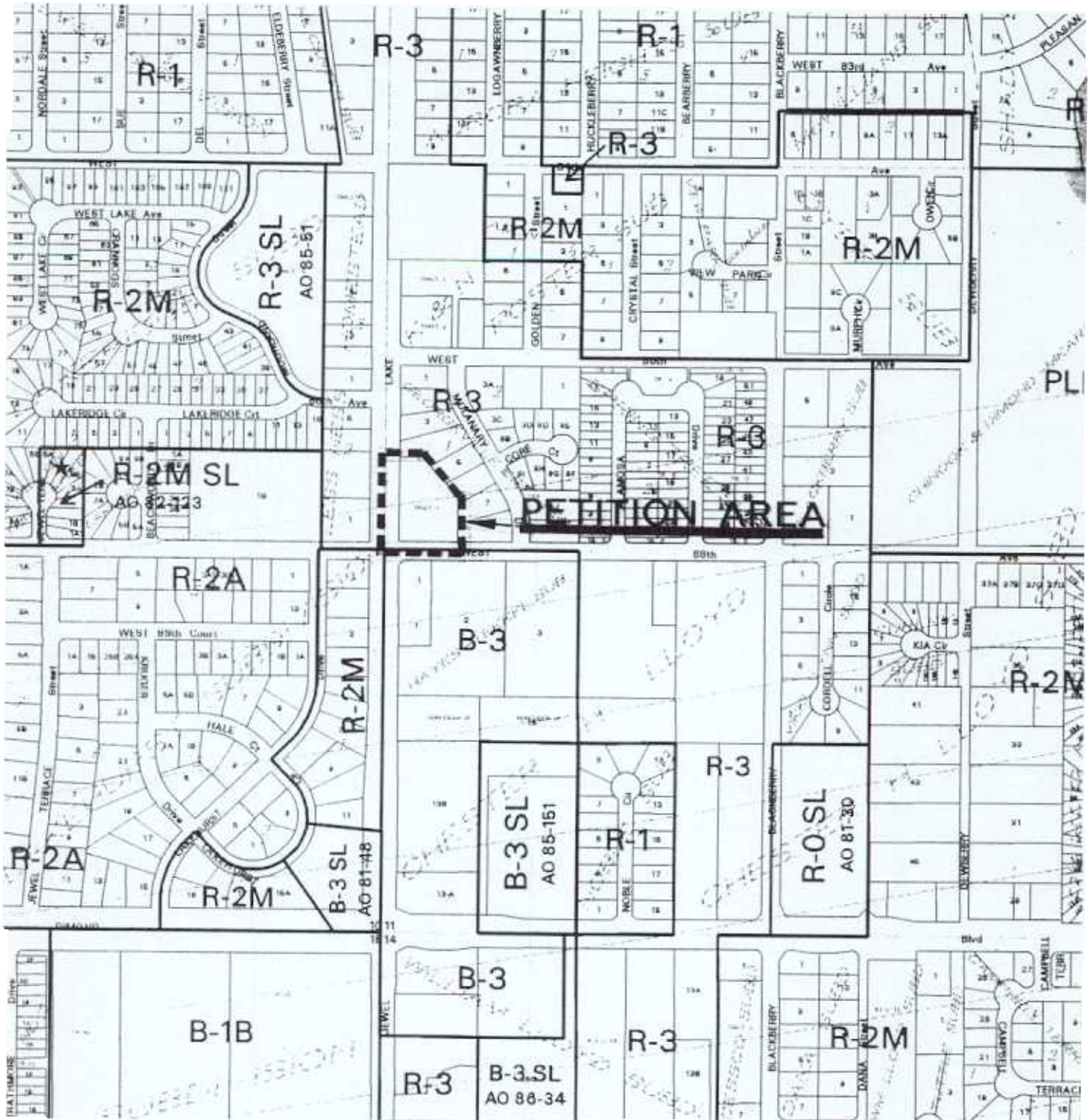
Fay Von Hemminger  
Chairman

Lizanne Ferguson  
Municipal Clerk

(2000-012)  
(012-272-53)

AM 475-2000

# 10-012 REZONING



**EXHIBIT A**

-  100 Year Floodplain
-  500 Year Floodplain

